

NEW

D600

Performance level

High 640x480 resolution detector and laser ranging

DUO-VISION PLUS

3.5" Tilting LCD

D600 uses a 3.5inch LCD screen, the user can adjust the angle of the LCD for the best viewing angle. The tilting design also provides protection for the LCD while the camera is not in use.

Automatic/Motorized Focusing

The D600 has a motorized lens which enables the user to focus the camera manually by using the keypad, or automatically using the touchscreen. This provides a clear and defined image for carrying out analysis.

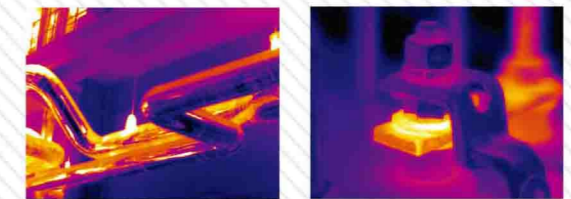


- | | | | | | |
|---|--|---|--|---|--|
| 
Ergonomic Design | 
Shock Resistant | 
USB | 
Multi-sockets | 
DUO-VISION PLUS | 
IP54 |
| 
Abnormal Temperature Alarm | 
Bluetooth | 
8 hours Continuous Operation | 
Sun Shield | 
Multi-lenses optional | 
Easy to Operate |



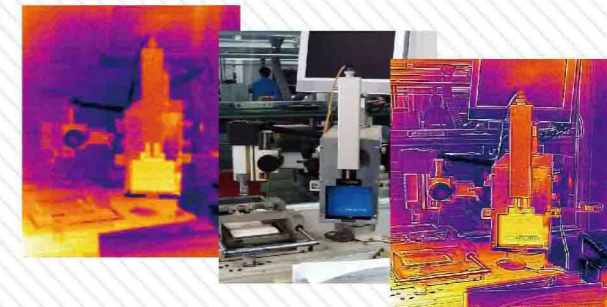
Excellent Image Quality

The D600 applies the latest image processing technology to reduce interference and together with the excellent performance of the 640x480 infrared detector, the D600 produces a high quality infrared image with clear and defined details.



DUO-VISION PLUS technology

By applying SATIR's DUO-VISION Plus technology, the infrared and visual image can be merged together to deliver a high quality and detailed image, that is unachievable through infrared alone, making it even easier for users to complete their analysis.



Flip and rotatable LCD

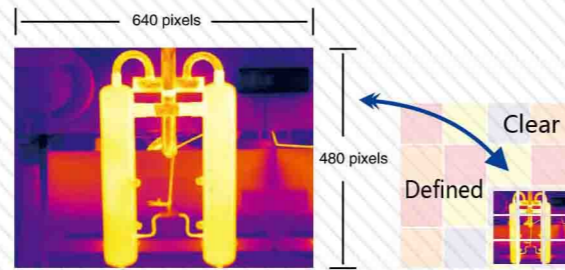
The D600 has a 3.5 inch rotatable and flippable LCD display, making it more user-friendly for touchscreen operation, and also enabling the user to get the best viewing angle.



Flip and rotatable LCD

High resolution 640x480 UFPA detector

At the heart of the D600 is a high resolution 640x480 UFPA detector. With an array of 307,200 active detectors, every on-screen pixel offers an accurate and reliable temperature measurement reading. A very high thermal sensitivity of 50mK (0.05°C@30°C) allows the D600 to display the sharpest images with superior image quality.



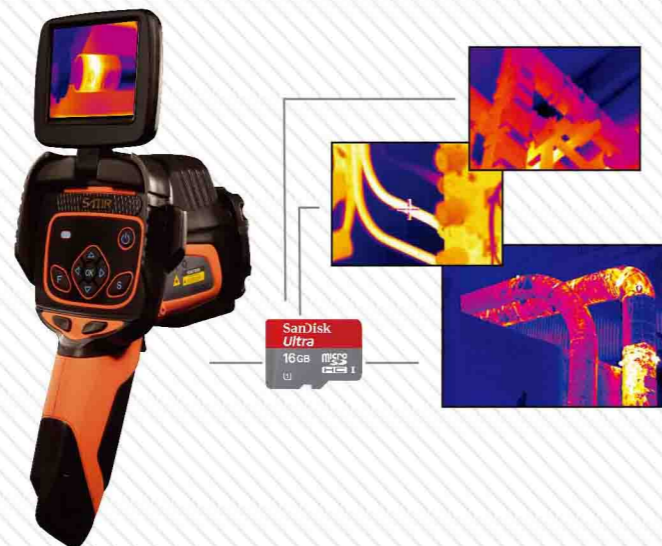
Long time operation

D600 uses lithium batteries with large capacity, and with its power saving design, it can work for more than 8 hours continuously.



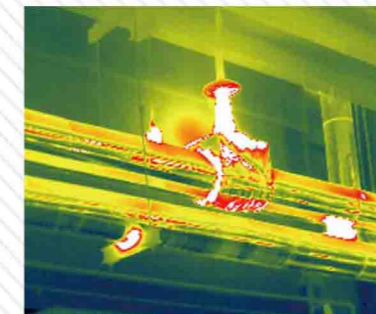
Built-in Memory Storage

The 16GB built-in memory provides a reliable and stable platform to save images without the risk of losing external memory cards.



Laser ranger finder(LRF)

The LRF integrated into the D600 can help users to acquire accurate information of the target position and distance.



Type	D600
Image performance	
FOV/Min.focus distance	24° x18°/0.20m
Spatial resolution	0.65 mrad
Thermal sensitivity	≤0.05°C@30°C
Detector type	UFPA
Resolution	640x480
Spectral range	8-14um
Focus	Manual/Motor/Auto
Image presentation	
Image mode	IR/CC IR/CCD/Duo-vision//Duo-vision Plus
LCD Display	3.5" Capacitive touch screen,640x480
Visible pixels	High definition CCD , 5million pixels
Video output	NTSC (60Hz) or PAL (50Hz) composite video
Temperature measurement	
Measurement range	-20°C ~ +600°C , up to +1500°C(optional)
Accuracy	±2° or ±2% of readings
Measurement mode	8 movable spots, auto hot/cold spot, profile, 2 area boxes, isotherm, line
Alarm	Yes
Image storage	
Type	16GB
File format	.JPG(thermal/Visual)
Power system	
Battery type	Built-in rechargeable lithium-ion battery
Charge interface	Type-C
Power manage	Auto shut off / Sleep mode
Environment specification	
Operating temperature range	-20°C to +50°C
Storage temperature range	-40°C to +70°C
Encapsulation	IP54
Physical characteristic	
Tripod mounting	1/4" _20